



Plasma Etch Inc PE-200 Plasma test using Electrode for Magazine



Purpose:

Plasma Etch developed the new electrode for Magazine. We evaluated contact angle and pull test for wire bonding.



STD



New Electrode



1. Method

: We set full substrates to Magazine. And Using the following parameter, Time is 10, 15, 20min. Then We checked contact angle of end of substrate and center.

Parameter

Ar Gas : 15CC/min

RF : 200W

: We made wire bonding to substrate and check the stitch pull strength.

2. Equipment

Plasma Etch : PE-200

Sample : K&S TEG PBGA

Shinkawa : UTC-250BI Super

Capillary : K&S 414FD-0110-R35

Wire : K&S AW-99 25um

Bond tester : Dage BT-2400

Pitch of Magazine strip : 6mm(20pcs insert)



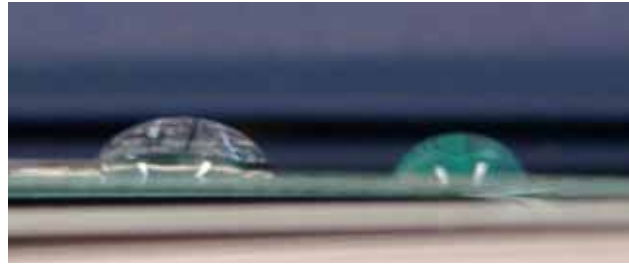
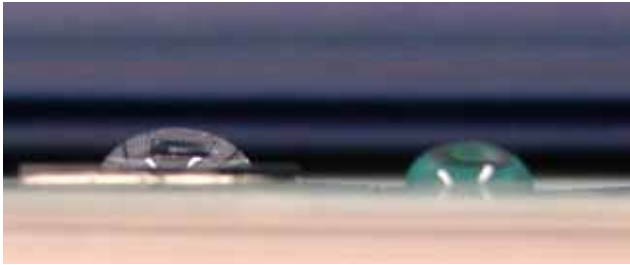
Electrode



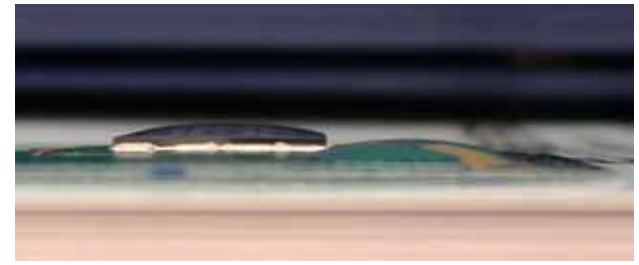
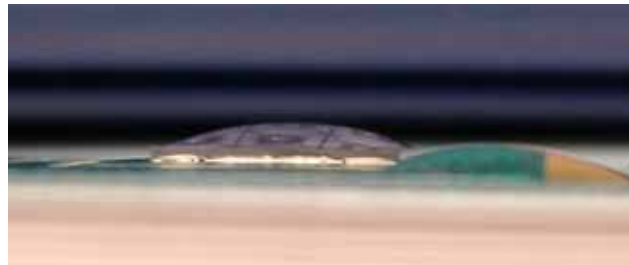
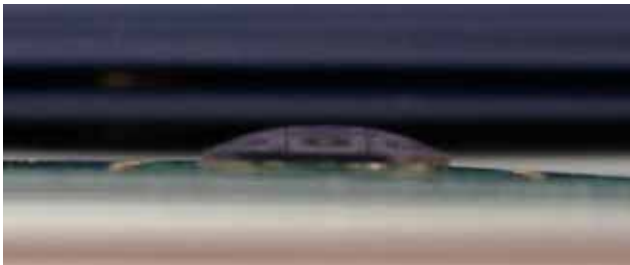
Magazine



Time=0min

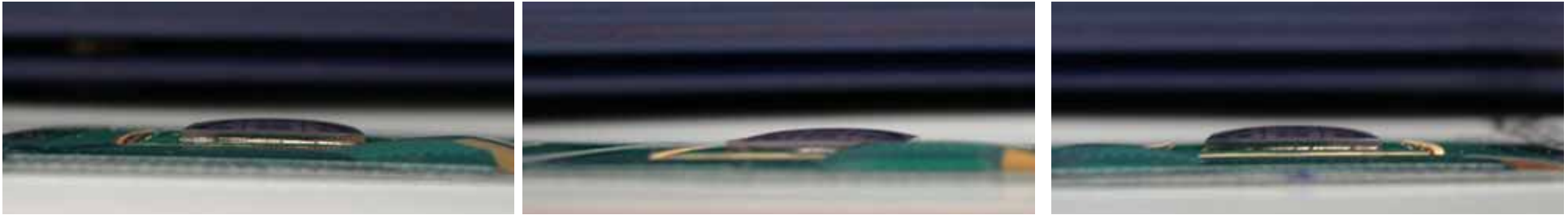


Time=10min

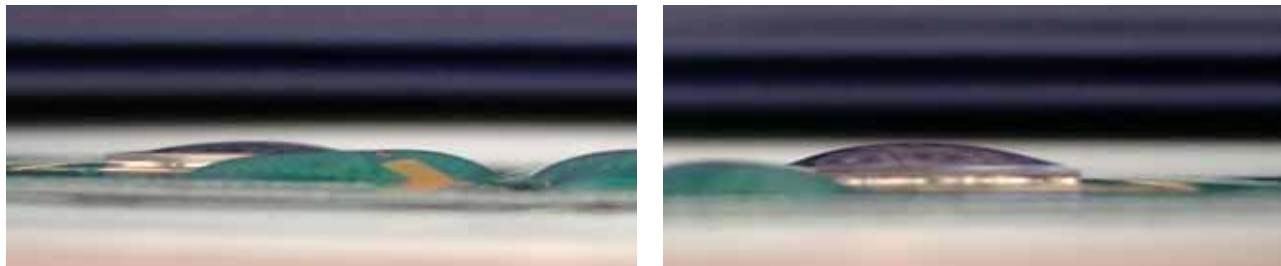




Time=15min



Time=20min



We could find improvement of contact angle after 10min. But Contact angle had unstability. So we change time parameter to 15min and 20min , And then we could find stable contact angle.



The method of stitch pull

Method : See the following picture.

Equipment : Dage BT-2400

Measurement number : T=0min 40 wires(10 wires each direction)

T=10,15,30min 20 wires(5 wires each direction)

